

SECTION 28, T12N-R3W

10th STREET (EW-106)

SECTION 32, T12N-R3W
WESTERN AVENUE (NS-307)

S. WALKER AVENUE (NS-307.5)

N. SANTA FE AVENUE (NS-308)
SECTION 34, T12N-R3W

RENO AVENUE (EW-107)
SECTION 5, T11N-R3W

752
FOUND PK NAIL & SHINER
AS PER LS #1395 REFERENCES FILED 2001
N:174615.0020
E:2108439.5050

756
FOUND CST NAIL IN
1484 STAMPED BRASS SHINER
N:174628.860
E:2111083.072

758
FOUND 3/8" IP WITH LEMKE CAP
N:174629.591
E:2113721.721

781
SET MAG NAIL & CA 990 SHINER
SEE DETAIL
N:171982.55650
E:2108435.5500

782
SET MAG NAIL & CA 990 SHINER
N: 171990.9719
E: 2111072.9713

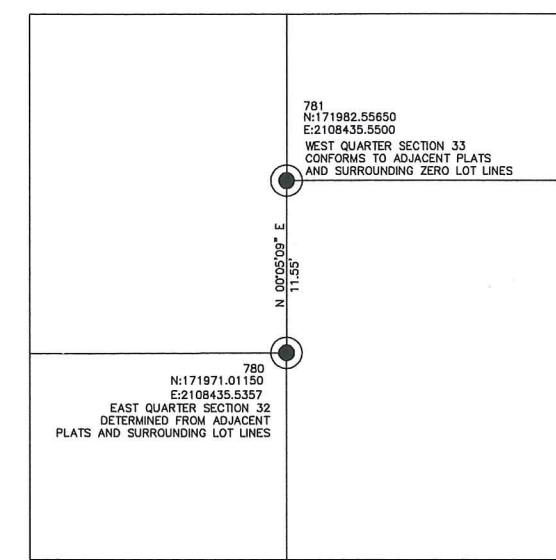
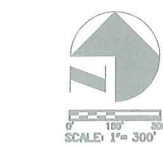
534
FOUND ODOT BRASS CAP
MONUMENT 0-55-717-A
PER ODOT REFERENCES
N: 171996.2516
E: 2113747.5081

CURVE # 3
PI Sta= 167+24.88
R= 2864.790'
Dc= 2°00'00.00"
A= 20°11'29.66"
L= 1009.579'
T= 510.079'
N= 169610.545
E= 2108911.443
CL= 1004.363'
CB= S 70°11'19.83" E
Ext= 45.056'

530
SET MAG NAIL & CA 990 SHINER
N: 169352.2387
E: 2111081.2637

760
FOUND ODOT MONUMENT 0-55-1069
N: 169366.5686
E: 2113720.1899

9018
RESET MAG NAIL & CA 990 SHINER
PER 1-40 RELOCATION COORDINATES
AND REFERENCES
N:169334.49160
E:2108434.99120



DETAIL OF WEST QUARTER CORNER

COORDINATE LIST		
No.	NORTHING	EASTING
530	169352.2387	2111081.2637
534	171996.2516	2113747.5081
752	174615.0020	2108439.5050
756	174628.860	2111083.072
758	174629.591	2113721.721
760	169366.5686	2113720.1899
781	171982.5565	2108435.5500
782	171990.9719	2111072.9713
9012	169334.4920	2108434.9910

SECTION 33, T12N-R3W, IM
OKLAHOMA COUNTY, OKLAHOMA

This Plat of Survey Meets The Oklahoma Minimum Standards For The Practice Of Land Surveying As Adopted By The Oklahoma State Board Of Registration For Professional Engineers And Land Surveyors.

DESIGN	
DRAWN	LJ
CHECKED	DWM
APPROVED	
SQUAD	

OKLAHOMA DEPARTMENT OF TRANSPORTATION	
GEOMETRIC & LAND TIES SHEET	
STATE JOB NO. 17428(88)	SHEET NO. 56